

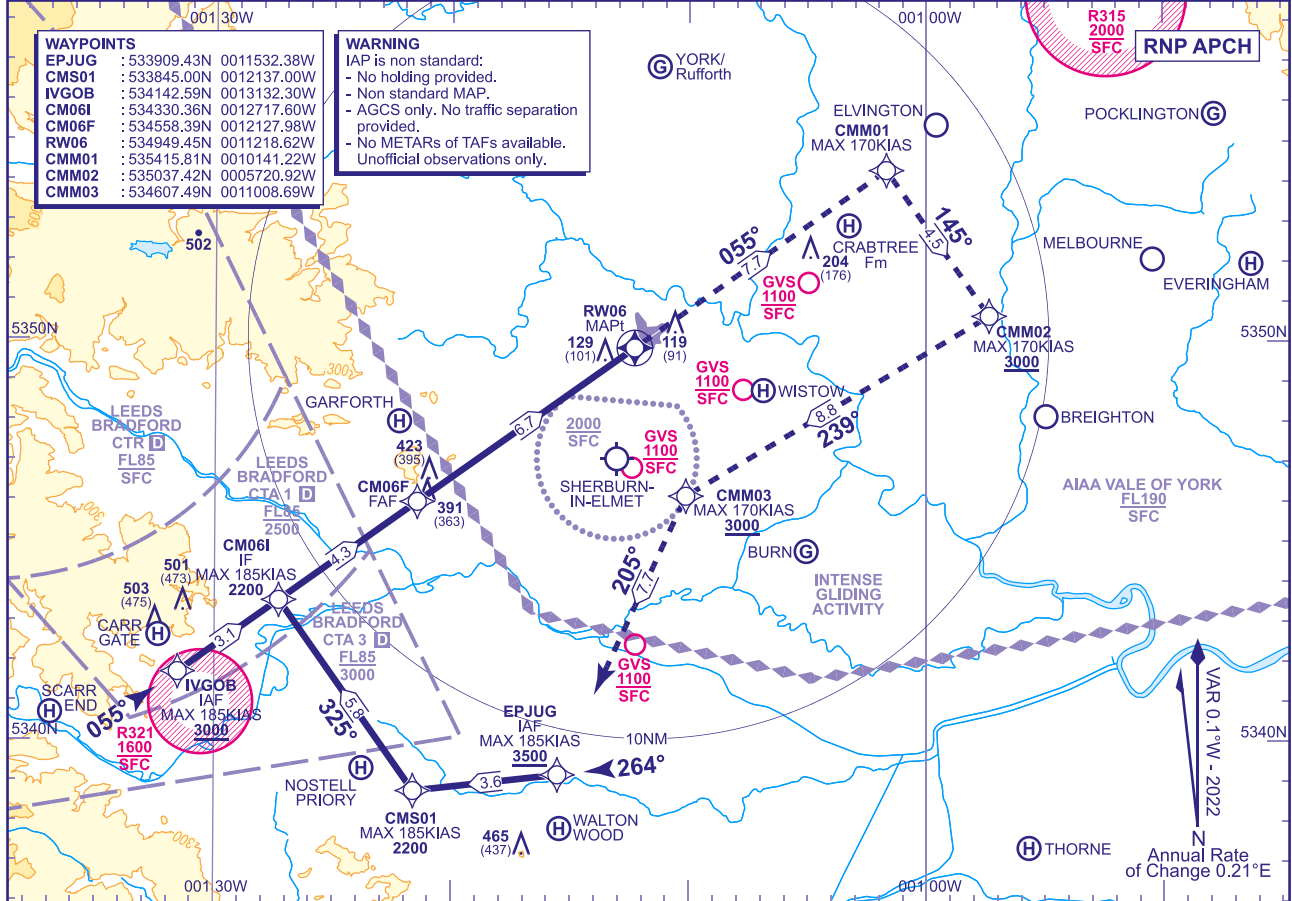


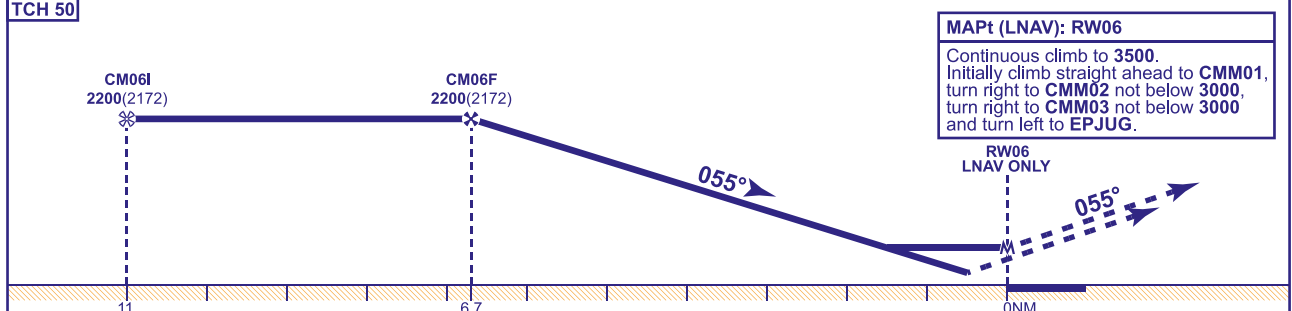
INSTRUMENT APPROACH CHART - ICAO

LEEDS EAST
RNP
RWY 06
 (ACFT CAT A,B,C)

 MSA 25NM ARP	 MSA 15NM ARP	A/G 120.710	FENTON RADIO	AD ELEVATION 29	<div>RNP RWY 06 (ACFT CAT A,B,C)</div> <div>MIN TEMP -10C TRANSITION ALTITUDE 3000</div>
				THR ELEVATION 28	
				OBSTACLE ELEVATION 503 AMSL (475)(ABOVE THR)	
				BEARINGS ARE MAGNETIC	



RECOMMENDED PROFILE VNAV - VERTICAL PATH ANGLE 3.0° (LNAV 5.24%), 318FT/NM					
NM to RW06	6	5	4	3	2
ALT (HGT)	1990(1962)	1670(1642)	1350(1322)	1030(1002)	710(682)



Aircraft Category		A	B	C	Rate of descent	G/S KT	160	140	120	100	80
OCA (OCH)	LNAV	670(642)	670(642)	670(642)		FT/MIN	850	740	640	530	420
	LNAV/VNAV	530(502)	530(502)	630(602)							
VM(C)OCA (OCH AAL)	Total Area	680(651)	680(651)	710(681)							

NOTE 1 CAUTION airspace Leeds Bradford CTA/CTR.
 2 Temperature at which VPA exceeds 3.5° is >40°C.